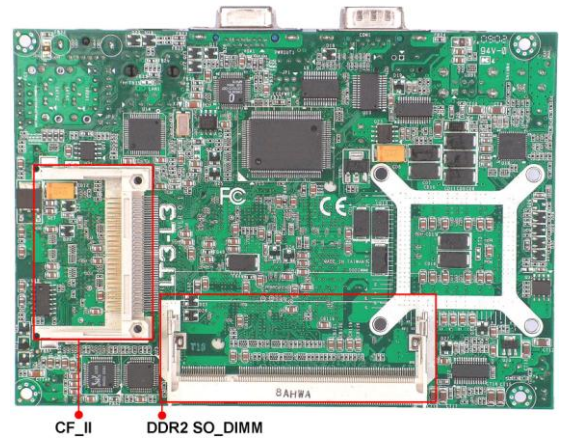
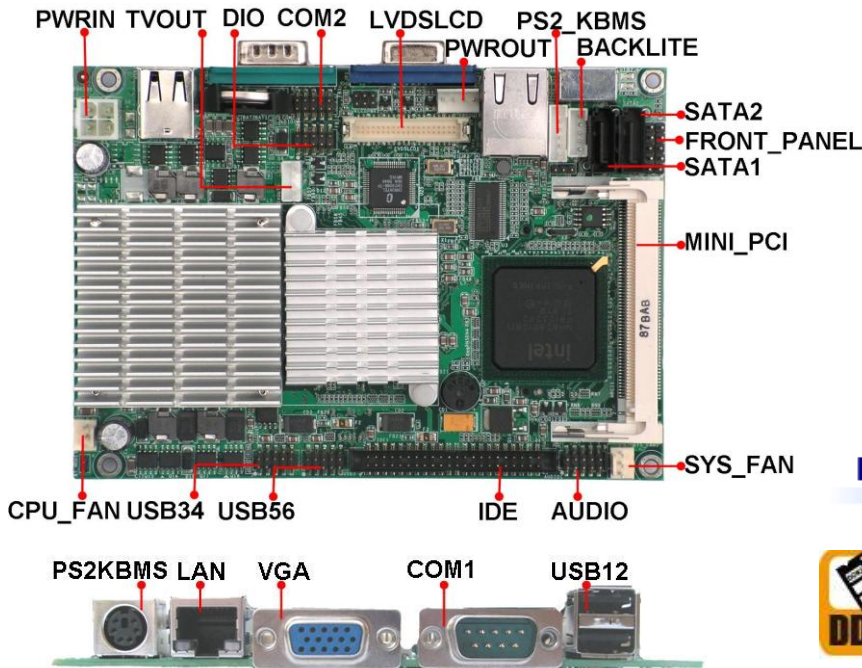




# FMB-LT35

www.forenex.com

Intel Atom N270 945GSE 3.5" SBC



Intel® Matrix Storage Manager



## Specifications

### Processor

- Intel Atom processor N270 on board.
- 1.6GHz Core Speed with Hyper-threading support.
- 533MHz front side bus speed

### BIOS

- Award Standard PnP Flash BIOS 6.0.
- 8Mbit FlashROM with BootBlock for Fail-safe.

### System Memory

- One DDR2 SO-DIMM Sockets.
- Supports DDR2-533 non-ECC memory up to 2.0 GB.

### Chipset

- Intel 945GSE and ICH7M chipset.

### Video

- Intel 945GSE Integrated GMA950 graphic engine.
- One D-Sub Female connector for CRT displays.
- One 40-pins connector for Dual 18/24-bits LVDS LCD.
- One 4-pins connector to support TV-OUT.
- Support dual display, Display devices can be selectable by BIOS or graphic drivers.

### 10/100M/1000M Ethernet

- One Realtek RT8111C on board for GbE LAN support.
- Support WOL and Remote Boot with PXE or RPL protocol.

### On Board I/O

- Winbond 83627HF LPC I/F Super I/O chip.
- Two serial ports as COM1~COM2.
- Six USB 2.0 ports support USB KB/MS and storage devices.
- One 6 Pins connector and one standard connector to support PS2 Keyboard and Mouse.
- One 8-bits digital I/O ports with configurable input and output.

### PIDE and SATA

- PIDE controller built in ICH7M supports up to ATA100 speed.
- One standard 44-pins box header to support 2.5" HDD or DOM Flash Disk.
- One CompactFlash(CF-II) socket supports all types CF Flash Cards.
- Two SATA connectors from ICH7M support SATA-I and SATA-II devices.

## Features

- Intel Atom Processor N270 on board.
- Supports DDR2 533MHz memory up to 2GB.
- One Mini-PCI socket on board to support WLAN.
- Rich I/O functions: 6 x USB2.0, 2 x COM ports, 2 x SATAs, 1x PIDE, 1x CF, 1x DIO, 1 x TVOUT.
- One GbE LAN maximizes the transfer bandwidth.
- Multiple display technology: CRT, Dual 24-bits LVDS LCD, TV-OUT, Dual Independent display supported.
- Single +12V power input with ATX and AT model support.

### Watchdog Timer

- Programmable watchdog timer for 1~255 Sec/Min.

### CMOS

- On-board RTC with 242 bytes of Battery-back CMOS RAM.

### Audio

- RealTek ALC888 High-Definition Audio chip on-board.
- Support Audio Line-in, Line-out and Mic-in.

### PCI/ISA

- One Mini-PCI 124pins Type-B socket.

### Power

- Single +12V power input only for normal operation.
- Support ATX and AT mode.
- Supply +5V and +12V power out for peripherals devices.

### Software Compatibility

- Microsoft windows: Win2K, Win XP 32/64-bits, Vista 32/64-bits.
- Linux 32-bits/64-bits and DOS 6.22.

### Cooling

- Two cooling FAN connectors for CPU cooler and System FAN.

### Dimensions

- 145mm (W) x 102mm (L).
- 3.5" little board standard dimension and form factor.

### Operating Temperature

- 0 to 60 °C operating temperature.
- -40 °C to 70 °C storage temperatures.
- Relative Humidity: 5~95%, non-condensing.



Forenex Technology Co., Ltd.

5F-2, No.212, Sec. 4, Wenxin Rd., North Dist, Taichung City 404, Taiwan  
http://www.forenex.com.tw

TEL: +886-4-2296-9886

FAX: +886-4-2296-9887

E-mail: laura@forenex.com.tw