

Company Philosophy and Thought



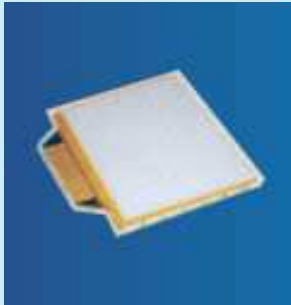
- **Great team, great company**
- **Human being orientated**
- **Win- win with all customers and suppliers**
- **Seek not only profit, but the noble spirit and thought**
- **Seek the balance and harmony in every respect**
- **Credit above all**
- **Enjoy the life and happiness with people all over the world**
- **Advanced philosophy and thought get no competitors**

What we can do



LCD Panels
TN
HTN
STN
TFT

LED Backlight Edge type , Blue
White, Yellow-Green , and so on



Touch Panel
Resistance ; Capacitive



LCD Modules
SMT
COG
COB
TAB

**Character
Graphic
Segment**

Designing House

Customized software and
hardware design



OEM & ODM production

Production for all kinds of customer
designed electronics devices and
semi-finished products

Plastics and tooling



LCD Module

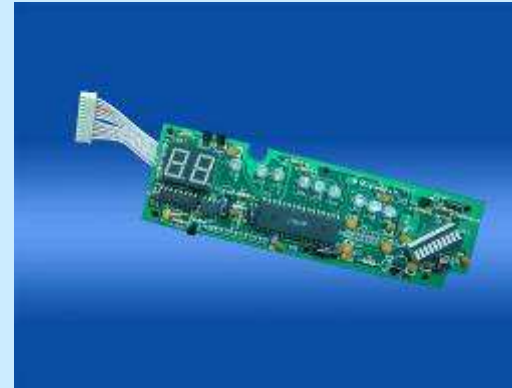


- ✓ From 8*1 to 240*128
- ✓ Available in STN、FSTN
- ✓ backlight optional

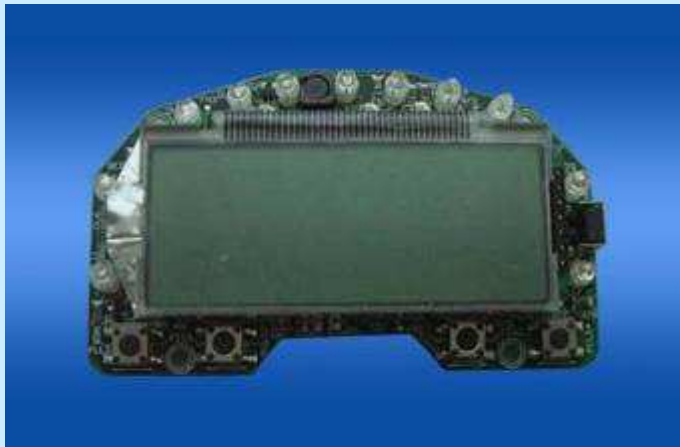
Customer Designed Module



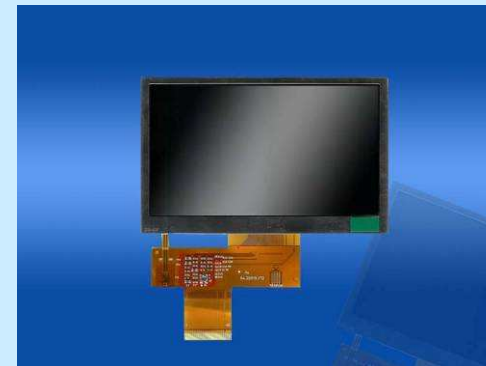
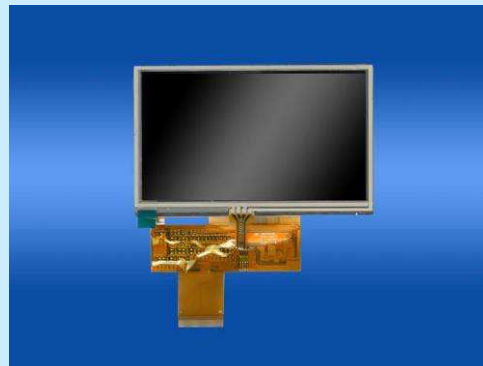
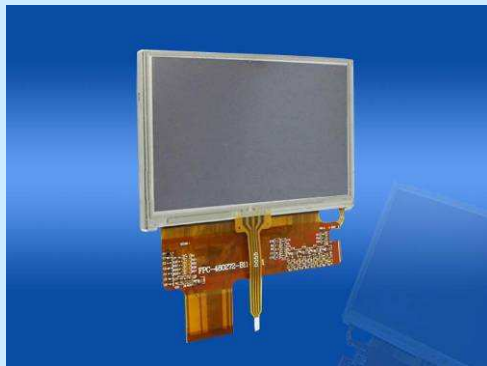
- Custom Design is highly welcomed.
- More than 50% of our products are customer designed



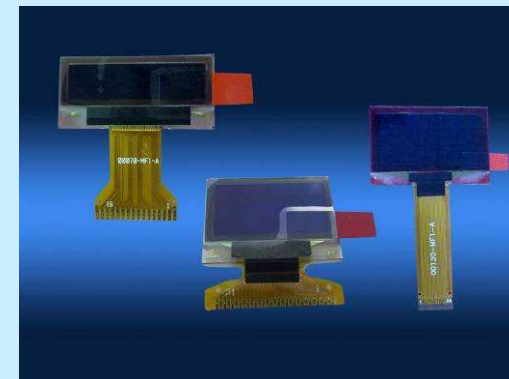
Customer Designed Module



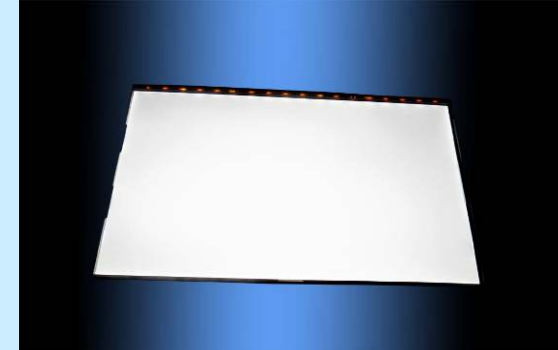
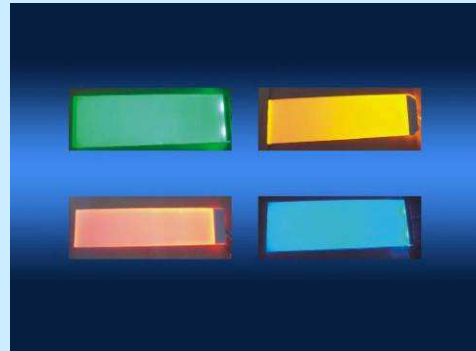
TFT Module



OLED Display



Backlight



WE ARE ABLE TO GIVE THE TOTAL SOLUTION FOR OUR CUSTOMERS

FACTORY INTRODUCTION

Total capital: USD2.5 MILLIONS

Facility Rent:9000 Sq. Meters.

Location:Guanlan Shenzhen, China

Established time: 2005.

Turnover of 2010:Will be around USD18 millions

R&D Staffs: 40

QA Staffs:45

Total Employees: 500

LCM as well as the OEM Assembling Capacity:

Around 1500K/Month in three shift



WE ARE ABLE TO GIVE THE TOTAL SOLUTION FOR OUR CUSTOMERS

FACTORY INTRODUCTION

COG BONDING MACHINES: 16 SETS.

COB BONDING MACHINES: 3 SETS.

SMT MACHINES : 3 SETS.

REFLOWING MACHINES: 3 SETS.

WAVING SOLDERING MACHINES: 1 SET.

AOI MACHINES: 4 SETS.

PRODUCTION LINES: 10 SETS.

INJECTION MACHINES: 5 SETS.

ALL TOOLING MACHINES: 15 SETS.



WE ARE ABLE TO GIVE THE TOTAL SOLUTION FOR OUR CUSTOMERS

OEM PROJECTS

EASTTOP DISPLAY HAS A WONDERFUL R&D TEAM BOTH FOR HARDWARE AND SOFTWARE. EASTTOP DISPLAY HAS GOT SO MANY SUCCESS FOR MANY KINDS OF OEM OR ODM PROJECTS FROM DIFFERENT COUNTRIES. WE SUPPLY THE LCM , MAIN BOARD , SOFTWARE AS WELL AS PLASTICS AND SO ON AS THE WAY OF TOTAL SOLUTION.



WE ARE ABLE TO GIVE THE TOTAL
SOLUTION FOR OUR CUSTOMERS

PLASTICS AND MOULDING



WE ARE ABLE TO GIVE THE TOTAL SOLUTION FOR OUR CUSTOMERS

LED PRODUCTION

EASTTOP DISPLAY HAS OUR OWN LED PRODUCTION LINES FOR THE LED BACKLIGHT PRODUCTION, WE ARE ABLE TO PRODUCE ALL KINDS OF MONO AND COLOUR DISPLAY LED BACKLIGHT.

CAPABILITY: 30K PER DAY WITH DIFFERENT KINDS OF BACKLIGHT WITH TWO SHIFT.



WE ARE ABLE TO GIVE THE TOTAL SOLUTION FOR OUR CUSTOMERS

TOUCH PANEL PRODUCTION

FACTORY : RAECE (SHENZHEN) CO. LTD.

EASTTOP DISPLAY INVOLVED TIME:

MAY, 2009.

CO. SET UP TIME: JAN. 2009.

WORKERS AND STAFFS: 250.

WORKSHOP SIZE: 4500 SQUARE METERS.

CAPABILITY FOR RESISTANCE TOUCH PANEL:

2.3KK PCS PER MONTH.

MAIN APPLICATION:MOBILE, MP3,MP4,

GPS SYSTEM, INDUSTRIAL DEVICES.

WE HAVE GOT THE ISO9001:2000 QUALITY CERTIFICATE



WE ARE ABLE TO GIVE THE TOTAL SOLUTION FOR OUR CUSTOMERS

LCD PANEL PRODUCTION

WE HAVE LCD PANEL FACTORY IN GUANGXI PROVINCE,
THE NAME IS GUANGXI QINZHOU TIANRUI MICRO
ELECTRONICS CO.,LTD

WORKSHOP SIZE: 10000 SQUARE METER.

CAPITAL: USD7 MILLIONS.

WORKERS AND STAFFS: 700

ISO9001:2000 HAS BEEN PASSED IN 2006.

CAPABILITY: DEALING WITH AROUND 150K ITO

GLASSES (14*16 INCH) EVERY MONTH.

MAIN PRODUCTS:

ALL KINDS OF TN, HTN,STN, FSTN MONO-LCD PANEL.

DUTY: UP TO 1/160.

GLASS THICKNESS: 0.4MM MINIMUM.

OPERATING TEMP. : -30C TO 80C



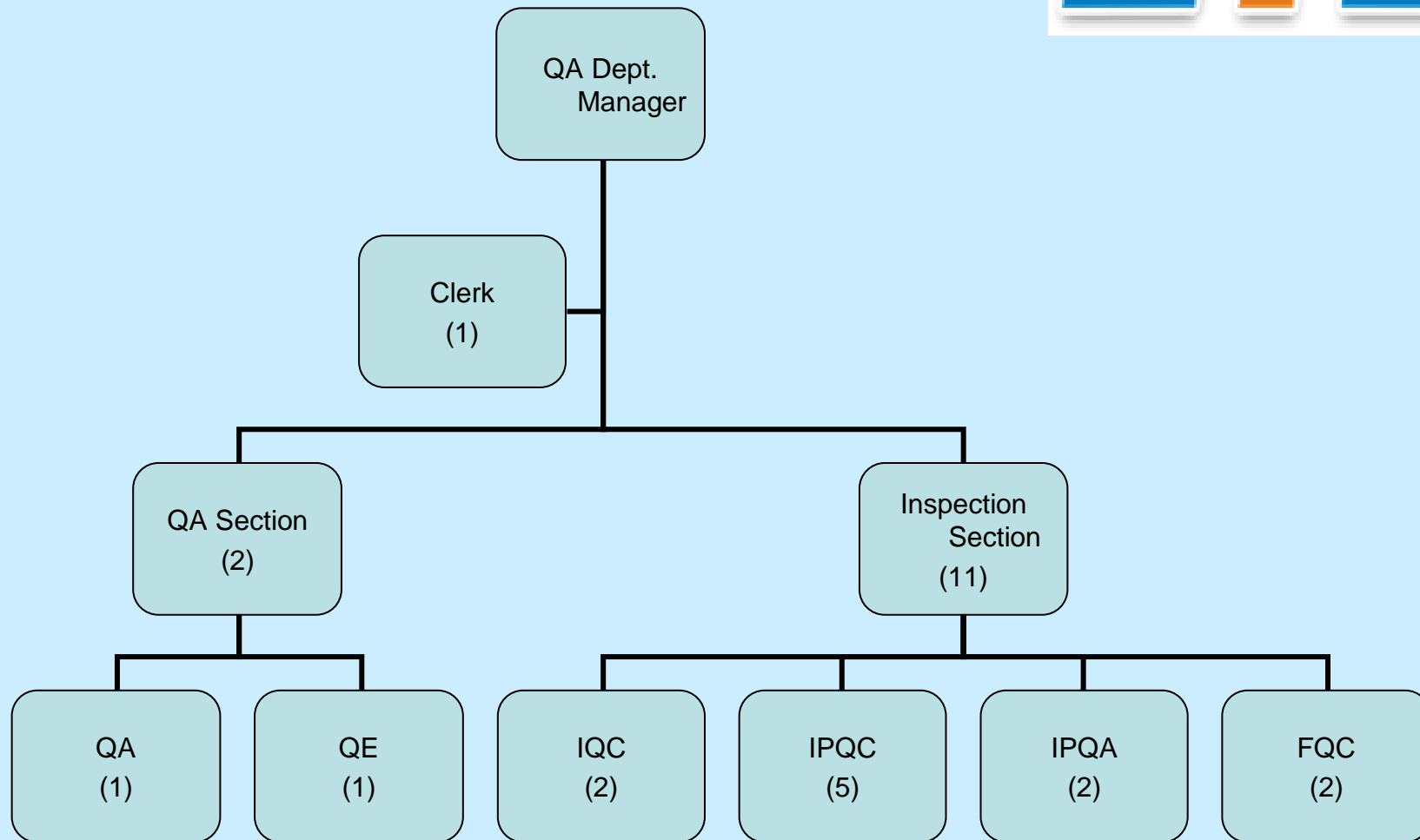
RoHS



All of our LCD modules are in compliance with RoHS standard.

SGS and other third-party Test Reports are available.

QA System: O-Chart



Easttop Display Co., Ltd.

